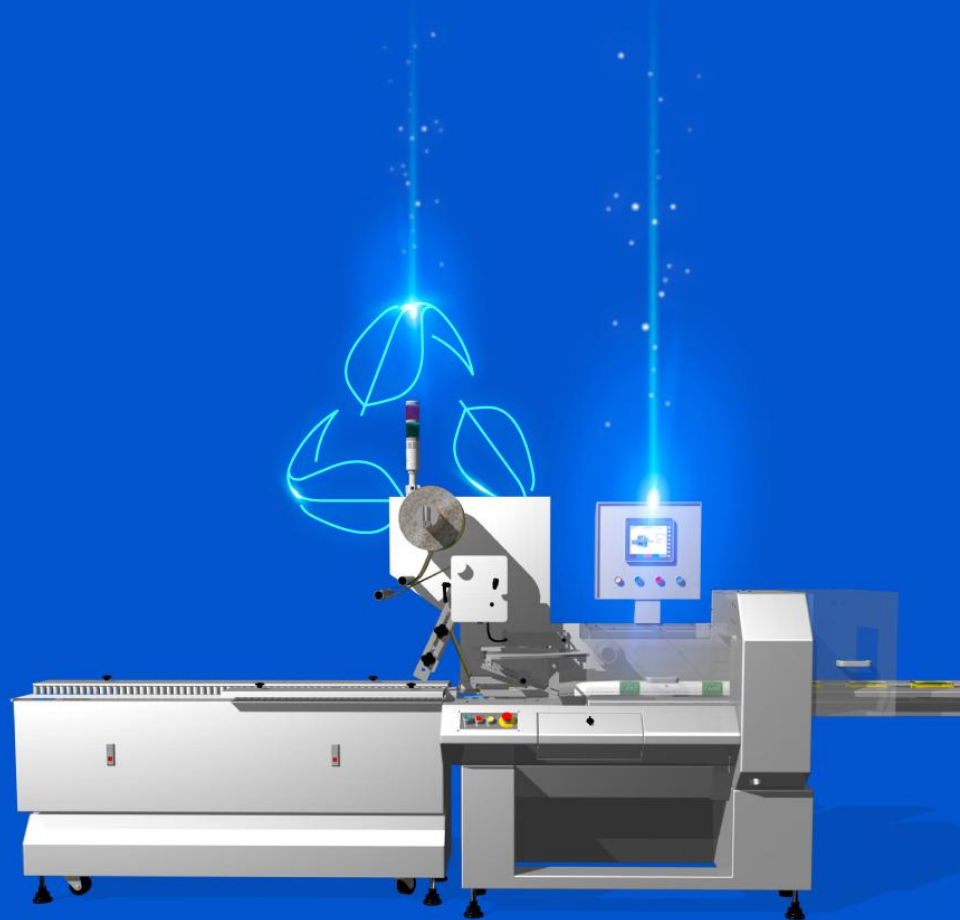




New service models for sustainable production.

Stay connected with your machines.
Cash in on your knowledge.





We are here

to end waste in manufacturing.

It is our mission to

**connect machines with their
builders to stop the wasting of
time, energy and raw material
during production processes.**

General Presentation

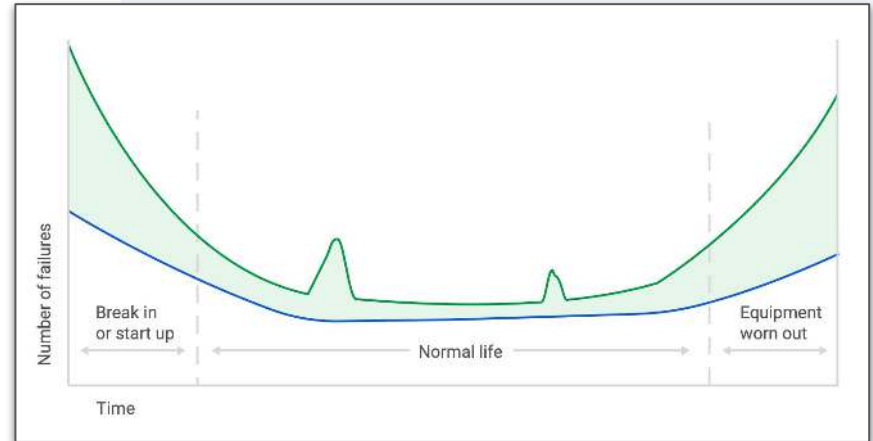


The things everyone needs have gone through many production processes, if one fails all steps before were useless.

We do this in collaboration with Machine Builders worldwide.

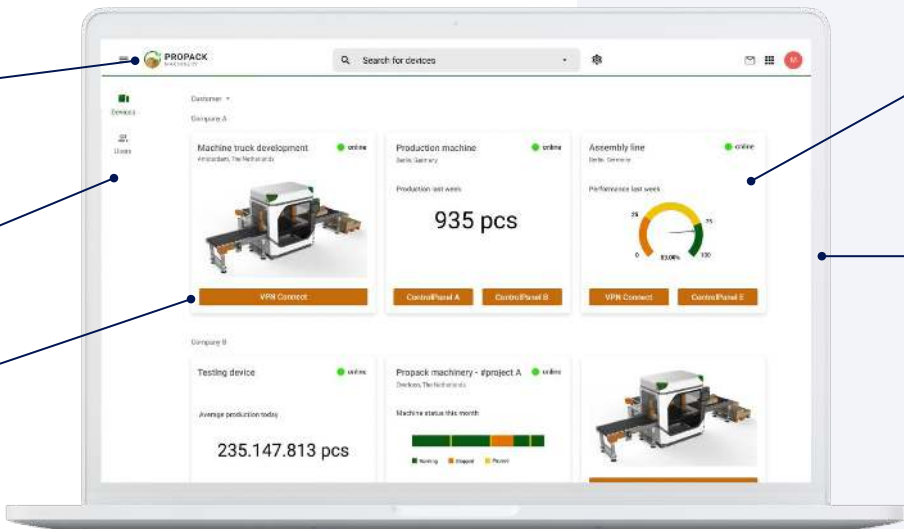
Our tools with their domain knowledge ensures the highest impact.

- Better output quality
- No defects and waste
- No downtime
- Less set-up times
- Lower energy consumption
- Lower cost price



One of the areas (in green) where profit can be made during the machine's life cycle.

IXON Cloud is the **all-in-one** IoT platform for the Machine Builder



Logo + url

Access for customers

VPN - Remote Access

Machine Data

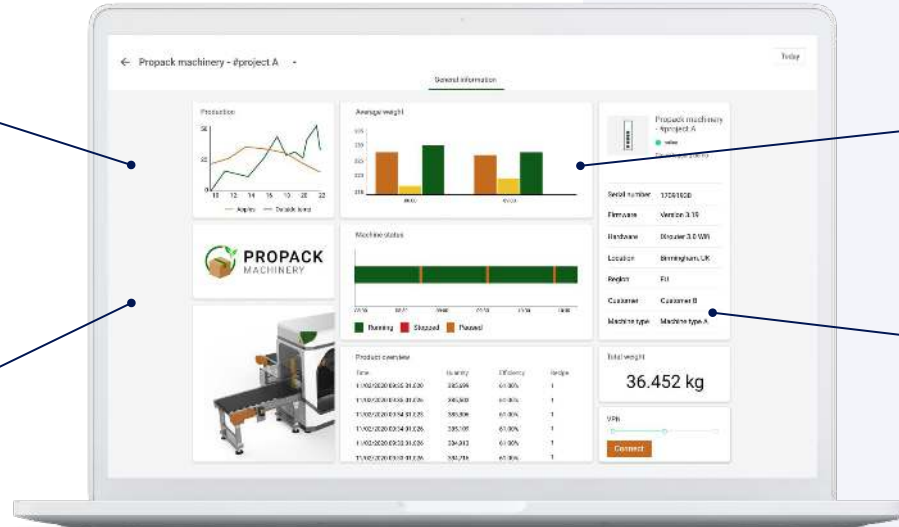
Drag & Drop widgets

The screenshot displays the IXON Cloud dashboard for 'PROPACK'. The interface includes a search bar for devices, a customer selection dropdown, and several data widgets. Key data points include '935 pcs' for a production machine and '235.147.813 pcs' for average production today. A performance chart shows a 100% status. The dashboard also features 'VPN Connect' buttons for remote access and a 'Machine status this month' bar chart.

Intelligent Machine insights

Predictive
Maintenance

Wear & Tear

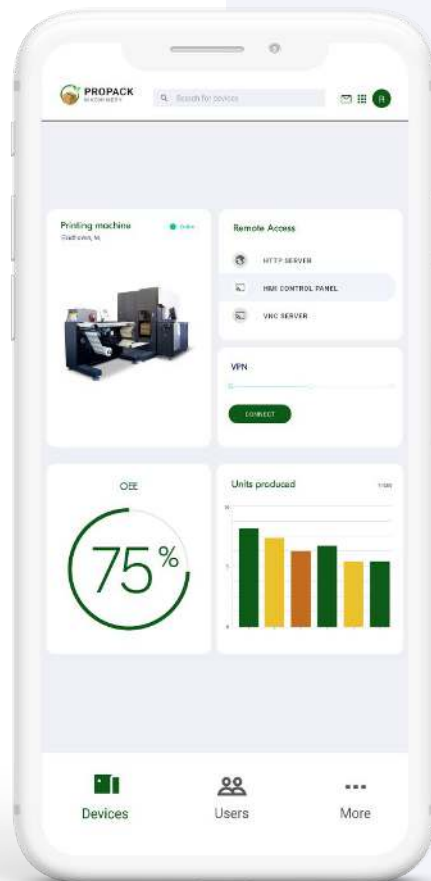


Downtime
analysis

Spare part sales

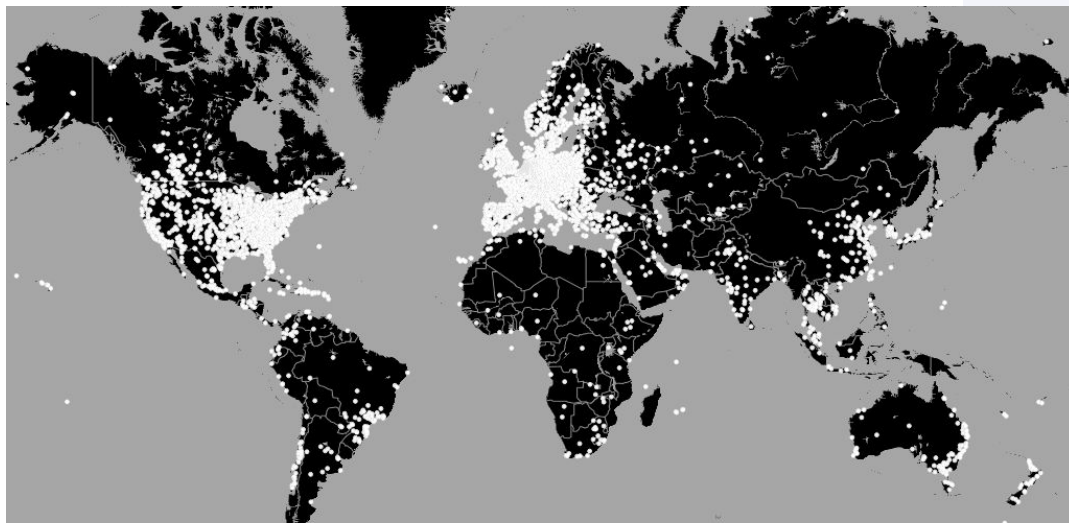


Offer
your app
with your
machine



General **Presentation**





Factories with Machines connected via IXON Cloud per 1/1/2022

2.500

Machine builders

40.000

Users

50.000

Connected machines





Security and infrastructure

- **Security team** led by Dylan Eikelenboom
- **100+ Servers**, worldwide distributed over **13 datacenters**
- Transparent communication via status.ixon.cloud
- Data stored **within EU**
- Security, Information and Event Management (SIEM) system in place to detect suspicious network traffic
- **ISO 27001, ISO 27017, ISO 27701 and IEC 62443** certified

General **Presentation**

- Atlanta, USA
- Dallas, USA
- Newark, USA
- Seattle, USA
- San Francisco, USA
- Sao Paulo, BR
- Amsterdam, NL
- Frankfurt, DE
- Vienna, AT
- Johannesburg, SA
- Singapore, SI
- Hongkong, CN
- Sydney, AU



2500+ high tech customers

SANOVO
TECHNOLOGY GROUP

DERO
GROEP
DERO ELTEN Buisson FORTIN

CME

nanoGrid for nature

ROLANDE

Hotraco Group

sormac S

tna
packaging & processing solutions

TORN
TACCHI

ENERGY SOLUTIONS

FMGRU

HAUZER

FINIS

VAI

GEA

BETTER ORIGIN

NT Technik

DINNISSEN
DIGITAL HYDRAULICS
PROCESS TECHNOLOGY

Massilly

stow
one brand, one company

ROXELL

PICANOL GROUP

HANSA

EXPERT

-ARCO

BRINK

DORSET GP
DORSET GROUP

ETTA

DIEFFENBACHER

Vecoplan®



IXON at a glance



IXON's new HQ in The Netherlands as of 1/1/2022



70+

Employees

50

Countries where we
have customers

**Local presence in
NL, DE, IT, UK, BE**

'14

The year IXON
was founded

71%

Annual growth over
the last 3 years

**Distributors in
40 countries**

Our organization



(18 FTE)

R&D team

Product innovation and IXON Cloud operations.



(21 FTE)

Sales team

Kickstart OEMs' IoT strategy and bring the right people and information on the table.



(7 FTE)

Marketing team

Communicates our offering to the industry.



(7 FTE)

Support team

Supports OEMs with a successful IoT implementation.



(5 FTE)

Supply Chain team

Accurate and high quality product delivery.



(7 FTE)

Staff team

Support, advice and provide insights to support organizational growth

Management team



Willem Hofmans

CEO

Marketing Director

Pieter van Lith

Martijn Theunissen

Sales Director

Our Core Values



01.

Innovators

We're innovators,
we do things differently.

02.

Freedom

Everyone has the freedom
and obligation to learn
and make an impact.

03.

Long-term

We value long-term:
quality always comes first.

04.



Leading

We help each other
by giving the right example
and leading the pack.

05.

Discover

We grow,
discover and go for
challenges.

06.

Boerenverstand

We use 'boerenverstand':
we have a can-do,
no-nonsense attitude.



07.

Transparent

We're open,
transparent and honest
with each other.

08.

Customers

We only succeed
when our customers
succeed.



IXrouter3 Edge Gateway

- Automatic failover
- Edge processing capabilities
- Major industrial protocols supported
- Local web interface
- Fast Cloud registration via USB
- Firmware upgrade Over The Air (FOTA)



Local vpn control

Wi-Fi Hotspot & Client

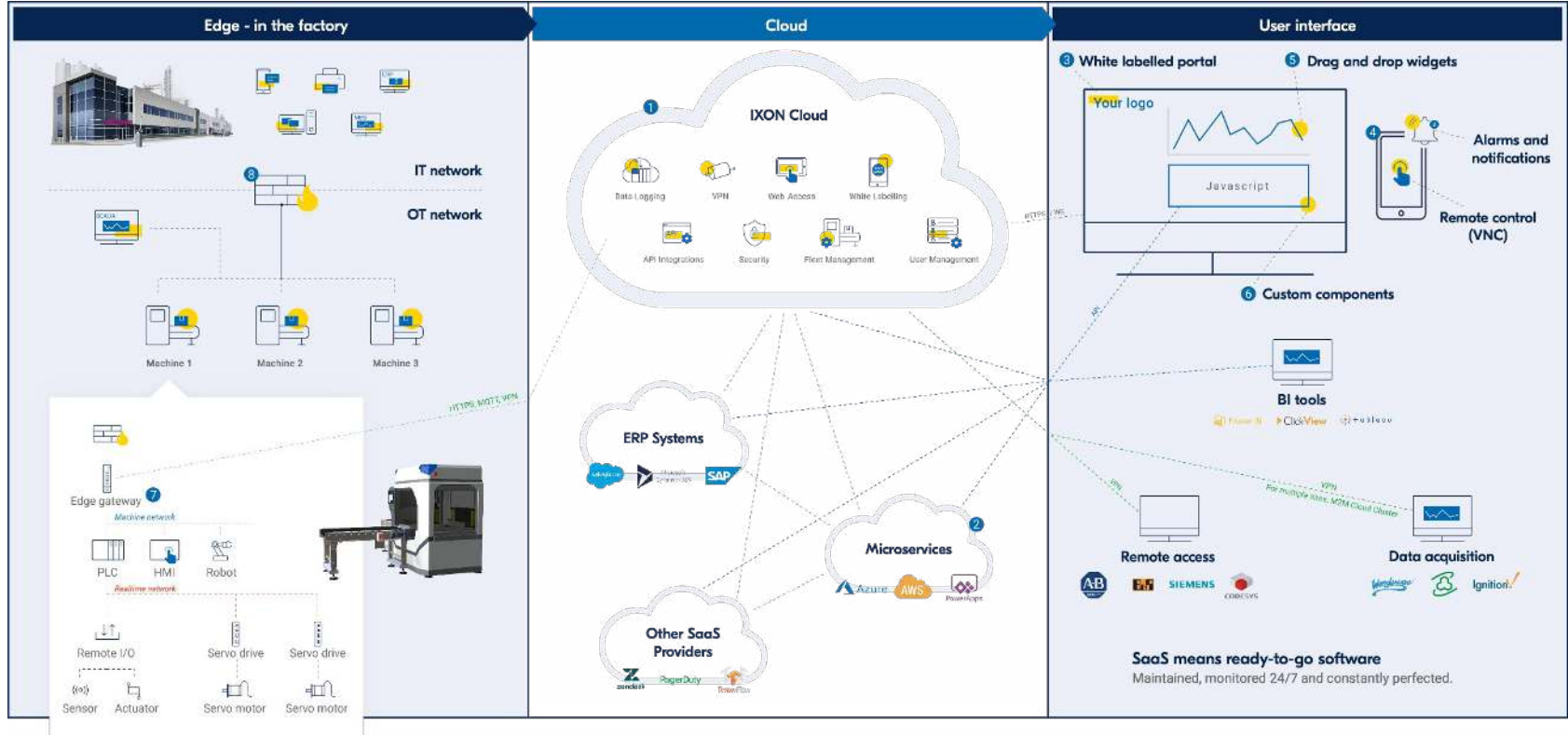
4G/LTE Global

DIN rail mountable

4 LAN ports (1GB)

Available in different configurations, with and without Wi-Fi or 4G/LTE.

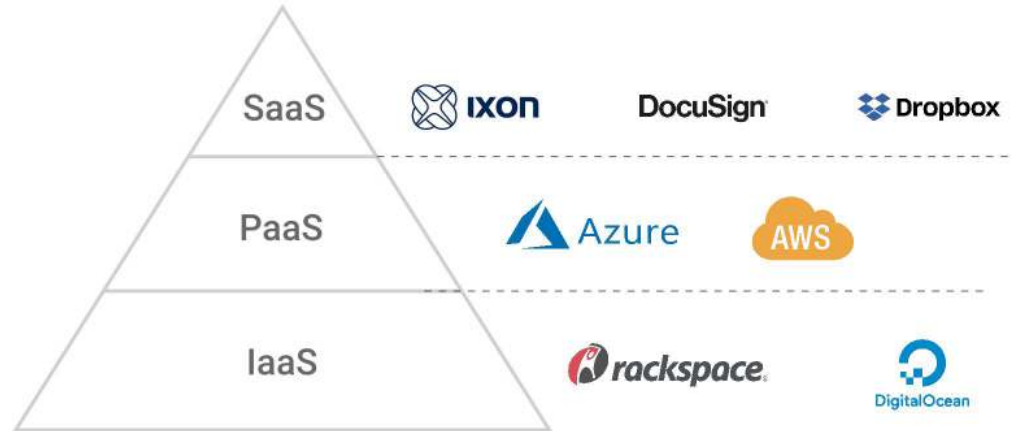
IXON IoT reference Architecture

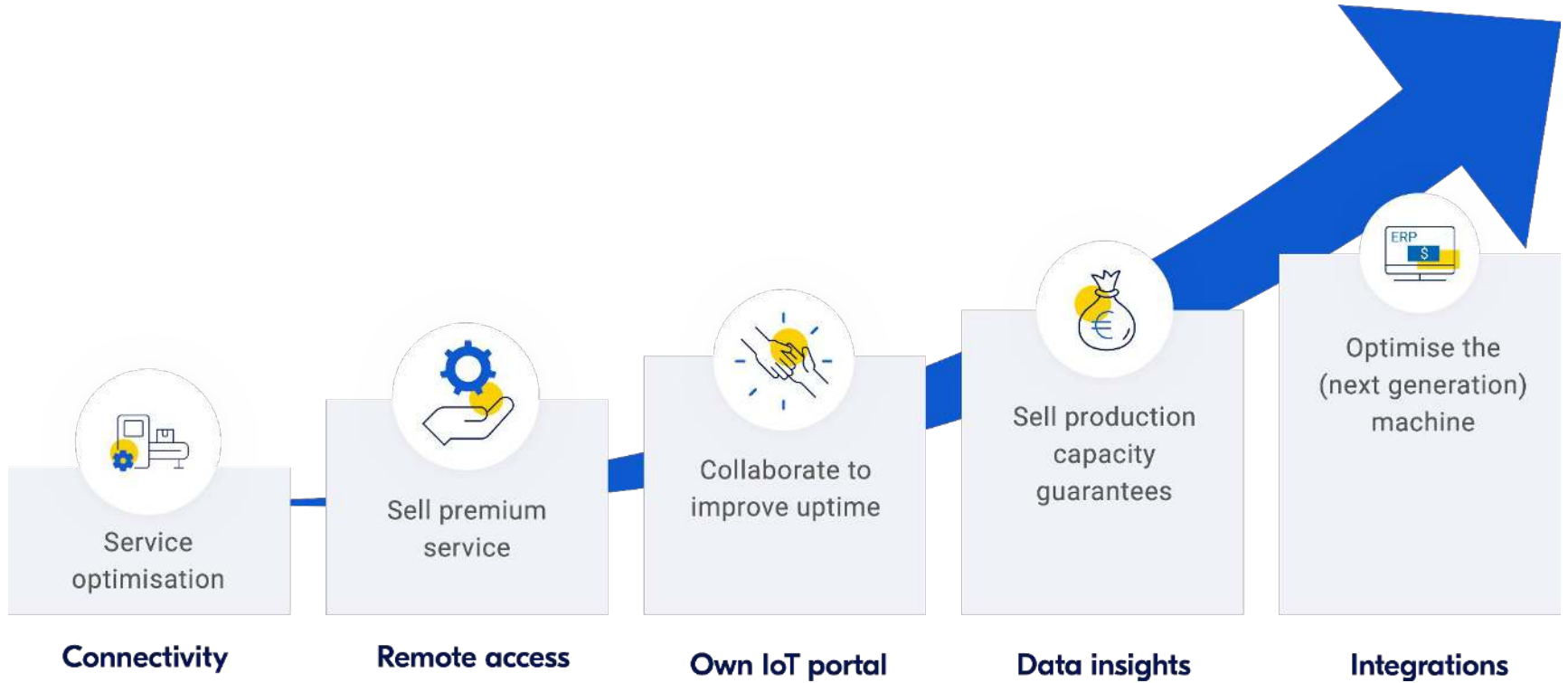


IXON = SaaS + no-code

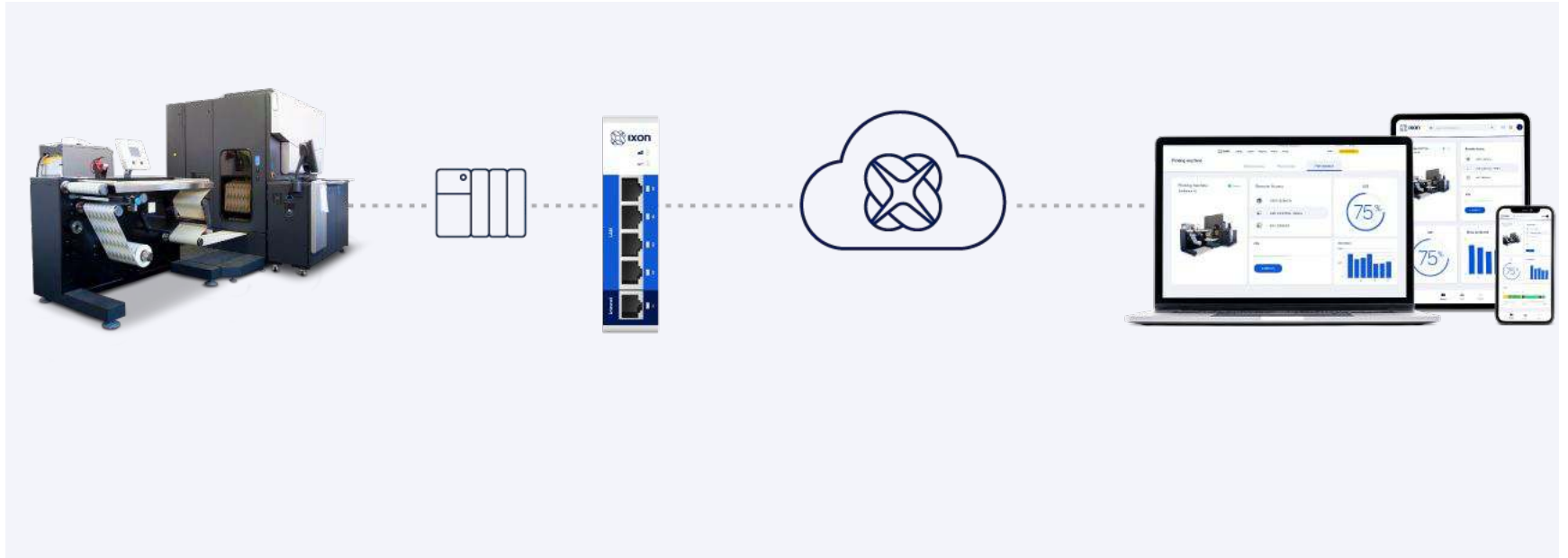
SaaS means ready-to-go software

Maintained, monitored 24/7 and constantly perfected.





From head to tail – from **Edge** to **Cloud**





**Thank you for
your attention.**